

GOLDENWOOD SECTION IV

N84°37'07"W 125.84'
(N84°37'07"W 125.44')

10' UE

30' PEDERNALES ELECTRIC COMPANY EASEMENT

GOLDENWOOD WEST SECTION III



10' UE

N84°37'07"W 125.84'
(N84°37'07"W 125.44')

115

10' UE

116

10' UE

30.7'

16.3'

51.7'

124.1'

10' UE

125.44'

125.84'

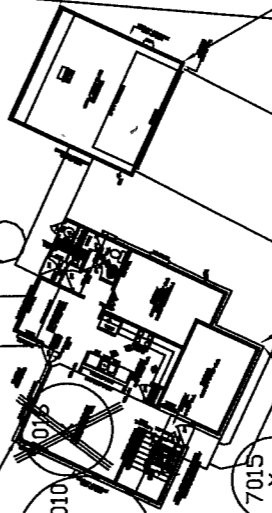
117

C1

DRIVE

1)

N84°37'07"W 125.84'
(N84°37'07"W 125.44')



7035 X

7034 X

7033 X

7031 X

7030 X

7023 X

7020 X

7021 X

7019 X

7017 X

7018 X

7032 X

7025 X

7028 X

7029 X

7027 X

7024 X

7010 X

7015 X

7014 X

7013 X

7012 X

7011 X

7005 X

7037 X

7036 X

7038 X

7008 X

7009 X

7007 X

7006 X

7004 X

7003 X

7002 X

7001 X